

# The Internet of Things is here!

**Charles Verdon**  
Data Innovation Strategist





**“Ransomware attacks will target more IoT devices in 2018”**

**“Huge IoT botnet may be used for Ukraine attack”**

**“When smart gadgets spy on you: Your home life is less private than you think”**

**“Industrial IoT to equip new era of corporate intruders coming in through devices”**

**“Security experts warn of dangers of connected home devices”**

**“Hacking these IoT baby monitors is child’s play, researchers reveal”**

**“Hackers infect 500,000 consumer routers all over the world with malware”**

**“Your smart fridge may kill you: The dark side of IoT”**

**“The Lurking Danger of Medical Device Hackers”**

**“Why the KRACK Wi-Fi mess will take decades to clean up”**

**“Hacking critical infrastructure via a vending machine? The IOT reality”**

**“Protecting Your Family: The Internet of Things Gives Hackers Creepy New Options”**



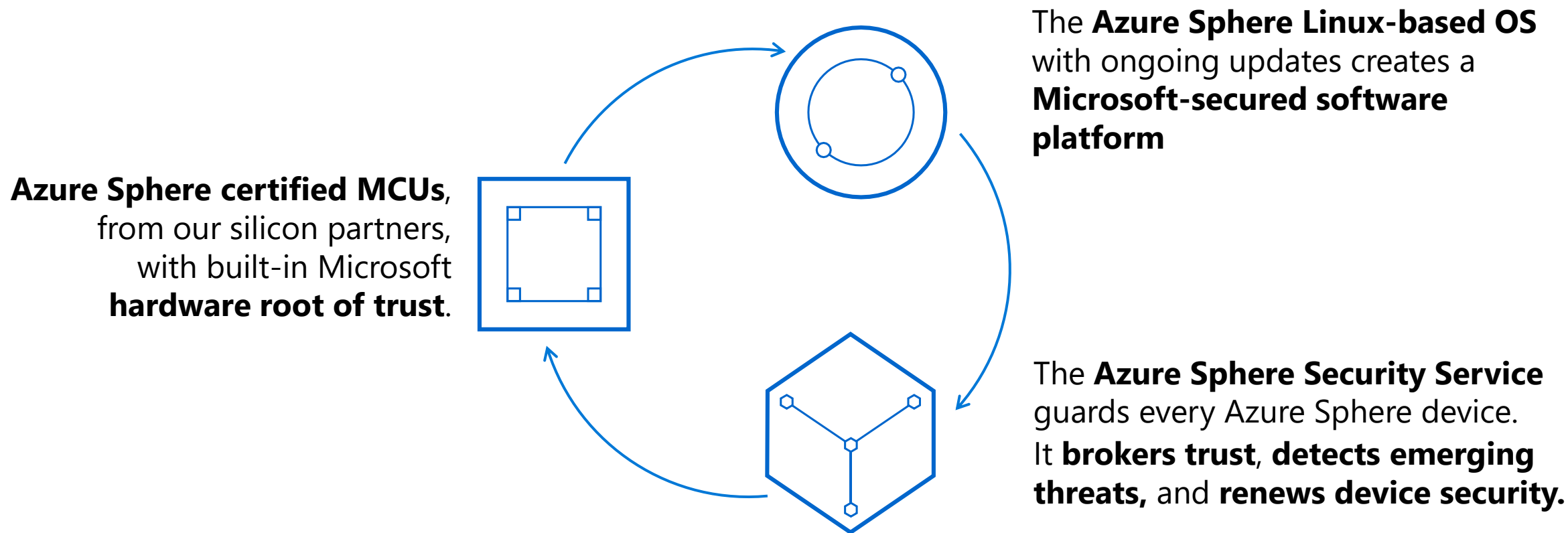






**SECURITY IS FOUNDATIONAL**  
It must be built in from the beginning.

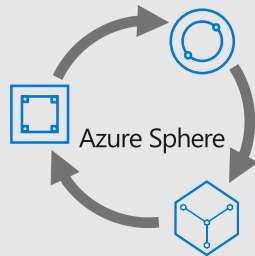
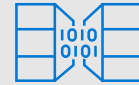
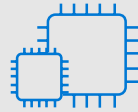
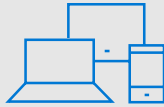
# Azure Sphere is an end-to-end solution for securing MCU powered devices



# Azure IoT

Build your own with  
Azure solutions and  
services

Software as a Service  
with Azure IoT Central



## Azure IoT Edge

# Azure IoT Central

Fully managed SaaS solution

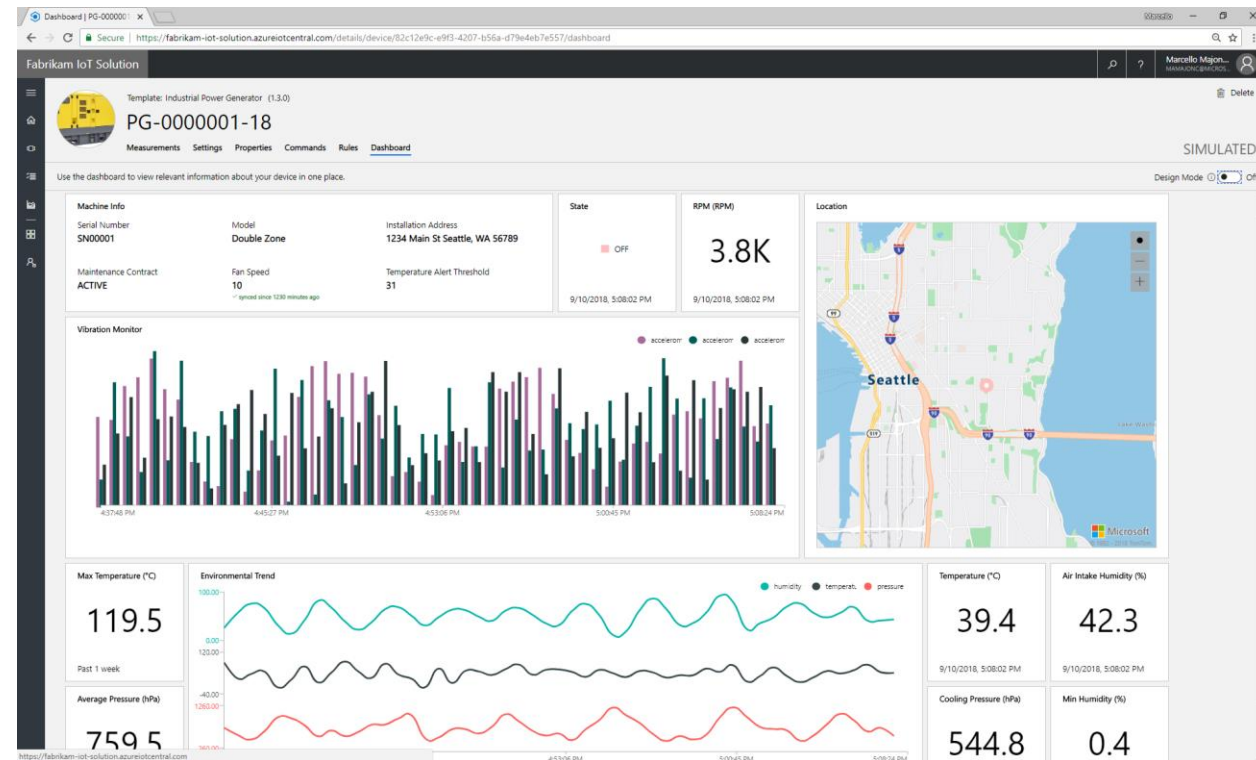
No cloud expertise required

Built in security best practices

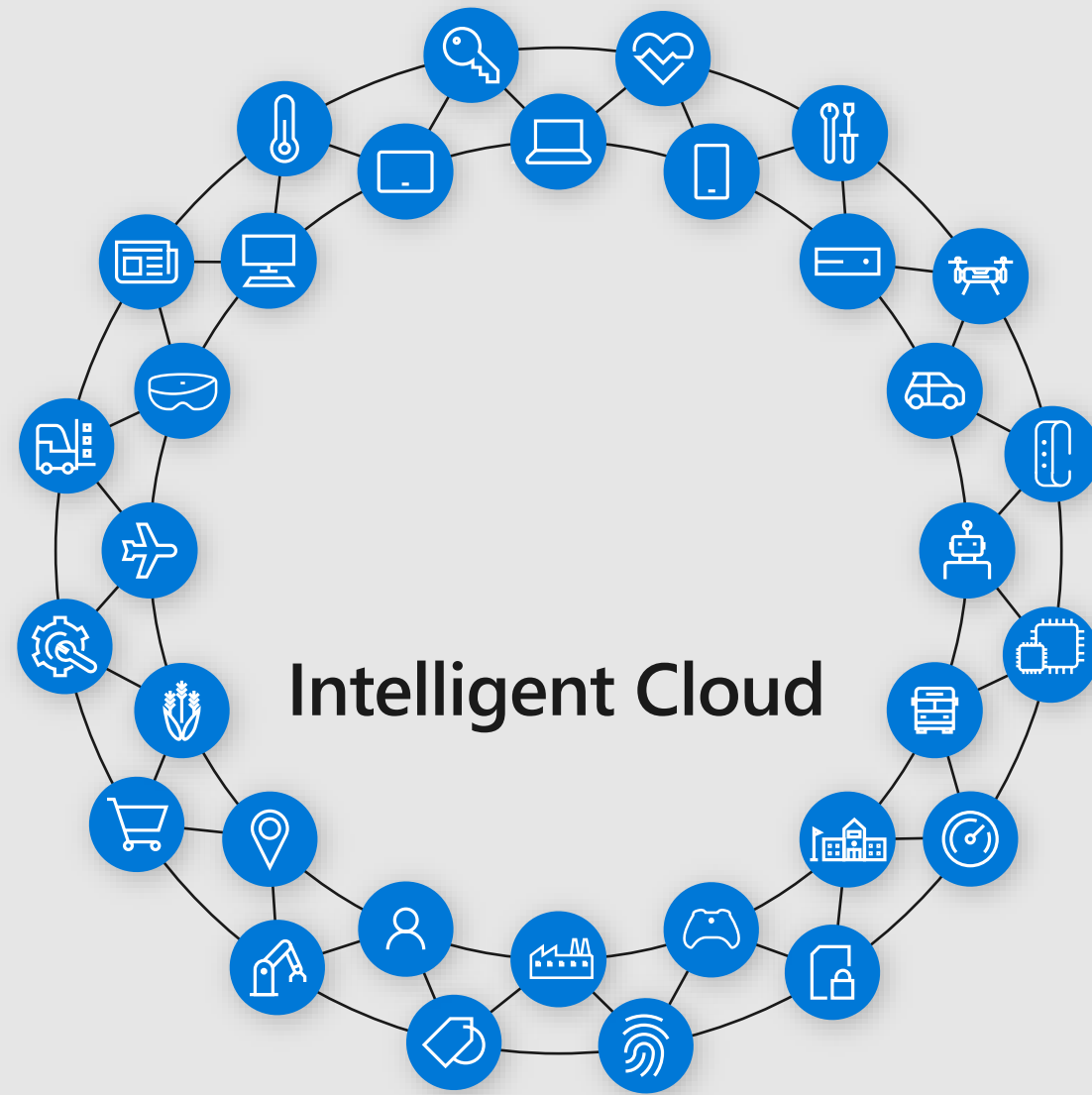
New extensibility features

Transparent and predictable per device pricing

Try today: <http://azureiotcentral.com>







Intelligent Cloud

Intelligent Edge

# Smart buildings

Connected devices can securely control a building's operations.

Integrated window pane sensors

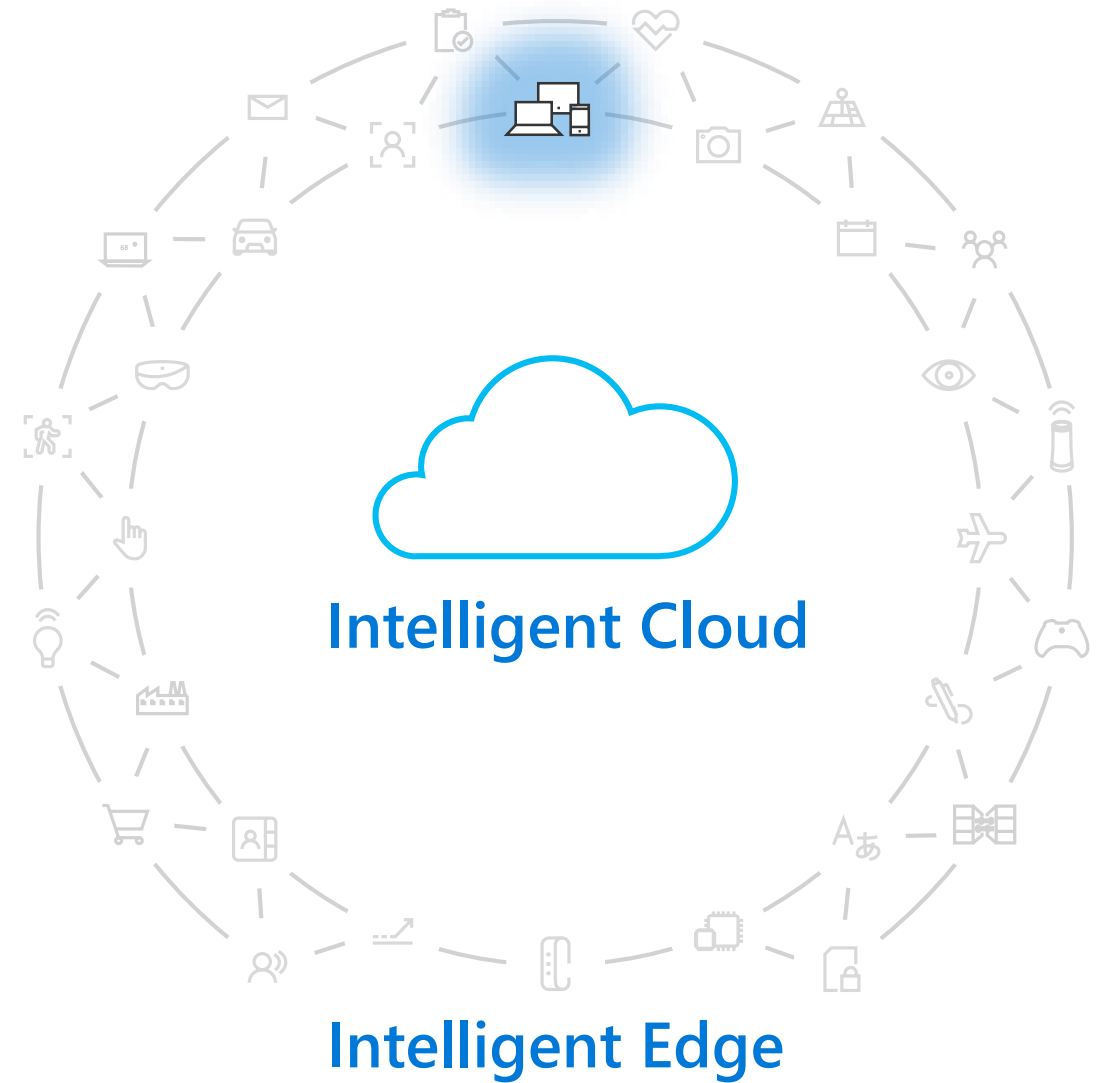
Smart door and window locks

HVAC systems

Indoor and outdoor lighting

Smart gas readers

Elevators



# The Microsoft Campus Real Estate Portfolio

## In 2012...

- Disparate applications and systems
- No ability to holistically manage our infrastructure and prioritize maintenance activities
- Labor-intensive reporting
- Two full-time employees running a manual maintenance program
- \$60 million estimated cost to retrofit to integrated equipment



145 structures



Multiple building systems



58,400 housed heads



\$55M annual utility spend



15M SF office & lab space



2M connection points



50-55 megawatt hour average



# Software Defined Buildings Campus



## EASIER SYSTEM COORDINATION



Improved technician efficiency with **32,300 work orders per quarter**



**48%** of faults are corrected within **60 seconds**

## LOWER ENERGY CONSUMPTION



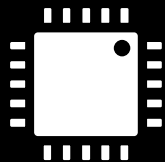
Forecasted energy savings of **10–11% Per Year**

## REDUCED COST



**Saved \$2 million** in its first year

# Let's secure the future.



SECURED FROM THE SILICON UP

## with Azure IoT!



Microsoft